

# SPECIALIST HEALTHCARE ADVICE

---

## HEALTHCARE

**Your trusted  
legal partner**



**Our specialist team is dedicated to providing comprehensive legal advice and guidance to health and social care providers.**

**We understand the pressures, opportunities and innovations shaping the healthcare sector, and we are here to help you navigate the ever-changing landscape.**

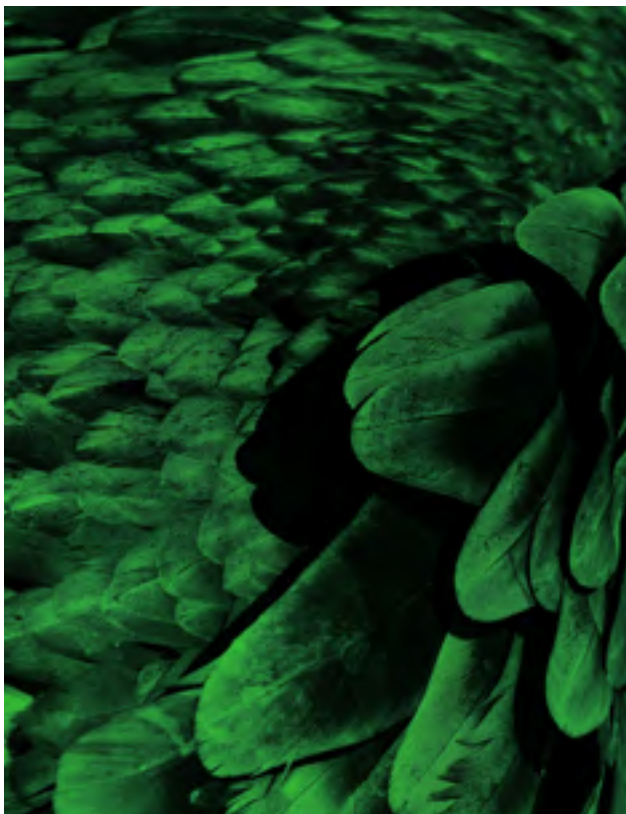
—



## TAILORED LEGAL SOLUTIONS

We are a full service law firm offering a wide range of legal services to meet your specific needs. Our expertise covers areas such as:

- buying, selling, re-organising and re-financing healthcare businesses
- assisting with collaborations and mergers between parties
- governance (rules relating to the ownership and management of the business)
- succession planning (how you will eventually exit the business)
- challenging CQC inspection reports, ratings, reviews and decisions
- buying and selling property
- construction, development and planning
- recruitment including advising on sponsorship licences and right to work checks
- employment & HR including drafting contracts and dealing with tricky staff issues
- data protection, cybersecurity, intellectual property, going digital and brand protection
- commercial agreements and procurement advice
- disputes including property and contractual
- HSE investigations and prosecutions
- inquests and coroner's investigations
- occupational health and safety, fire safety and wider premises safety



## UNMATCHED EXPERTISE AND SUPPORT

Our team consists of approachable experts who are well-versed in the challenges faced by healthcare providers. Whether you are a care home owner, supported living operator, specialist or children's care provider, hospice, GP practice, primary care network (PCN), health tech company, pharmacy, dental practice, NHS Trust, social enterprise or any other healthcare service provider, we have the knowledge and experience to assist you.

## PROVEN TRACK RECORD

Our team has a wealth of experience in the healthcare sector. Some highlights of our work include:

- acting for Phoenix Learning & Care Group on a major refinancing project and various acquisitions
- advising on a £16 million sale of a care portfolio (including a care home and supported living units). The sale involved support from corporate, property, employment, litigation and IP teams
- advising Stonehaven Healthcare in its acquisition of Woodhayes Nursing Home in St Leonards, Exeter
- providing legal support to Cornwall Air Ambulance Trust on property, employment, commercial contracts, and charity law matters
- assisting an NHS Trust with senior exits
- advising primary care out-of-hours service providers on governance and commercial matters
- providing legal support to St Monica Trust on a range of regulatory, property and commercial matters
- acting in connection with HSE prosecutions brought against NHS Trusts and Care Homes arising from serious and fatal incidents

We have also successfully handled GP practice mergers, guided PCNs on network agreements and structure, collaborated with health tech start-ups on agreements and brand protection, and facilitated acquisitions and sales for care home groups, veterinary practices, dental practices, and pharmacies. In addition, we have advised on the scope of CQC registration requirements, challenged CQC inspection reports and fines on behalf of clients and advised hospices on commercial agreements, branding and data protection issues.

## DON'T JUST TAKE OUR WORD FOR IT

Here's what some of our clients have to say about working with us:

“ On a scale of 1-10 the team at Stephens Scown were an 11...I was blown away with each department's level of professionalism, and especially Jade's leadership skills and determination in bringing the deal to a successful close, she was the glue that held it all together. ”

**Burrow Down Support Services**

“ The team at Stephens Scown have provided robust, effective, and timely legal advice in all corporate, property, and employment aspects of our business. Pragmatic, creative, and informed, Stephens Scown has been able to focus on the finer details while also providing guidance on achieving our key strategic aims. ”

**Francois Delbaere**

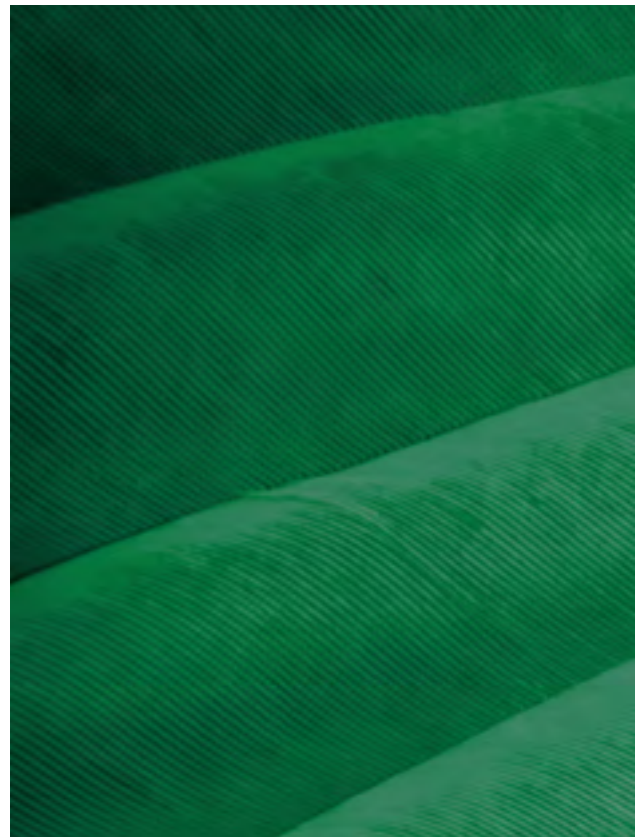
Financial Director of Phoenix Learning and Care Group

“ The Stephens Scown team recently represented the shareholders of a healthcare software business on its exit to an international strategic trade acquirer. In a sensitive and complex cross-border transaction the support was consistently high quality, in particular, the team's focus on key commercial issues (rather than legal minutiae), speed of work and openness of communication allowed all parties to feel involved and have their views represented. This in turn enabled a smooth and fast completion of the deal, a positive outcome for the management team with an ideal acquirer, and a successful exit for the shareholders. I would happily recommend the Stephens Scown Healthcare team and hope to work with them again in future. ”

**Large investor in a healthcare software business**

“ We have just completed the sale of our two care homes and would like to thank the team at Stephens Scown for their knowledge, understanding and support during the complex 18 month process. Jade Kent led the project brilliantly with Jen Short-Martin, Helen Wallwork, Laura McFadyen and Toby Pool providing a level of support that was fundamental to achieving a positive outcome. After appointing Stephens Scown as our legal representatives, it soon became very clear that we had made the right choice, the level of expertise gave us reassurance and the team were unwavering with their support. During the process we reached out to the wider resources at Stephens Scown and were guided on employment, commercial property, IP, regulatory and the healthcare sector. The communication hit the right tone at every point and the team were always approachable, responsive and efficient. We would absolutely recommend Stephens Scown and would use their services again in the future. ”

**Ben Smallridge, December 2025**



## PASSIONATE PEOPLE, NATIONWIDE COVERAGE

As a team, we are passionate about healthcare and strive to make a positive impact.

Though based in the South West, we serve clients nationwide. Our flexible and innovative approach allows us to offer top-notch legal expertise regardless of your location.

---

### Helen Wallwork

**Partner and Head of Healthcare**

**[h.wallwork@stephens-scown.co.uk](mailto:h.wallwork@stephens-scown.co.uk)**  
**07891 240961**



With over 20 years' experience in the healthcare sector, Helen has a deep specialism in this area. She regularly advises clients on:

- sales & acquisitions
- governance including shareholders agreements
- succession planning
- group reorganisations

Helen is also currently a trustee of Rowcroft Hospice.

"Helen is knowledgeable and reliable and knows our industry well and keeps up to date with changes. This gives her insights that other solicitors we have dealt with do not have."

**Legal 500 (2025)**

---

### Steve Panton

**Partner**

**[s.panton@stephens-scown.co.uk](mailto:s.panton@stephens-scown.co.uk)**  
**07720 432849**



With over 20 years' experience in regulatory enforcement and compliance, Steve's practice includes specialist healthcare advice including:

- HSE and Local Authority investigations and prosecutions
- CQC inspections, ratings reviews and enforcement
- safeguarding
- complaints
- inquests and coroner's investigations
- compliance and risk management
- occupational health, premises safety and fire safety

"Stephen Panton comes recommended for his ability to advise clients from a number of sectors. He handles both contentious and non-contentious issues, ranging from fatal accident cases to operational matters and proceedings following improvement notices."

**Chambers & Partners 2024**

---

### Jade Kent

**Partner**

**[j.kent@stephens-scown.co.uk](mailto:j.kent@stephens-scown.co.uk)**  
**07548 224516**



Jade is a key member of our Healthcare team, and a Championing Social Care Ambassador. She regularly advises clients on:

- sales & acquisitions
- governance including shareholders agreements
- succession planning
- group reorganisations

"We very much appreciated Jade's overall leadership, availability and clear explanations"

**Barry Shears, Denise Shears (former owners) and Joanna Foulstone (former director), Hillbrow Residential Care Home Ltd, April 2024**

---

### Lisa Mulholland

**Partner**

**[l.mulholland@stephens-scown.co.uk](mailto:l.mulholland@stephens-scown.co.uk)**  
**07736 884148**



Lisa is head of our Immigration team, specialising in all aspects of UK immigration and nationality law.

- sponsor licences and certificates of sponsorship
- supporting sponsors in meeting their ongoing duties
- audits of sponsor systems, processes and records to meet compliance duties
- training HR professionals/managers on compliant right to work checks and recruiting international employees
- advising employers subject to sanctions for employing illegal workers, and responding to Home Office requests

"The high standard of professionalism, diligent preparation, understanding of the present law and atmosphere were supported by warmth and appreciation of X's dreadful situation"

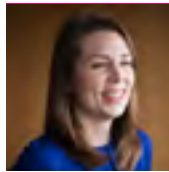
**Stephens Scown client (2025)**

---

## Laura McFadyen

### Partner

[l.mcfadyen@stephens-scown.co.uk](mailto:l.mcfadyen@stephens-scown.co.uk)  
07970 693091



Laura specialises in HR and employment law including:

- employment disputes, disciplinaries and grievances
- contracts of employment, staff policies and procedures
- whistle-blowing
- restructuring and redundancies
- TUPE transfers of staff
- employment advice on buying and selling businesses

"Laura's advice and guidance on employment law was extremely helpful throughout the process, particularly when dealing with some complex issues."

**Barry Shears, Denise Shears (former owners) and Joanna Foulstone (former director), Hillbrow Residential Care Home Ltd, April 2024**

---

## Tim Lane

### Senior Associate

[t.lane@stephens-scown.co.uk](mailto:t.lane@stephens-scown.co.uk)  
07548 225837



As a commercial lawyer, Tim supports healthcare sector clients in respect of a number of matters including the following:

- Primary Care Network Agreements
- commissioning and funding arrangements involving the public sector
- commercial contracts in respect of the supply of goods and services

**Legal 500 2025 - Leading Associate**

---

## Chris Twaits

### Partner

[c.twaits@stephens-scown.co.uk](mailto:c.twaits@stephens-scown.co.uk)  
07729 099344



Chris is a Dorset-based property lawyer with 25+ years' experience advising investors, developers and occupiers nationwide. Chris is a Legal 500 Leading Partner 2015–2025 and Former legal trustee of Julia's House a children's hospice charity. Chris's main areas of focus are:

- commercial sales, purchases & leases
- Dorset and Somerset market focus
- building the firm's legal offering

"I am thrilled to have Chris join us as a Partner in the Real Estate team. He comes with an outstanding reputation and is highly regarded for the quality of his work and expertise in the commercial property sector."

**Richard Baker, Managing Partner at Stephens Scown**

---

## Max Miliffe

### Data Protection Specialist

[m.miliffe@stephens-scown.co.uk](mailto:m.miliffe@stephens-scown.co.uk)  
07545 646608



Max assists clients with a range of complex data protection matters including:

- compliance with data subject rights, including right of access requests
- website compliance, including privacy policies, cookie policies, and CCTV
- drafting data processing and data sharing agreements
- advising on freedom of information requests

## BALANCING PEOPLE, PLANET, AND PROFIT

As the first large UK law firm to become employee-owned, we have built a dynamic and innovative business dedicated to delivering exceptional service while fostering a supportive workplace. At Stephens Scown, we are committed to a sustainable future. We are proud to be the first B Corp™ law firm in the South West, demonstrating our commitment to high standards of social and environmental impact. By balancing people, planet, purpose, and profit, we contribute to positive change within the legal industry.

## WHY STEPHENS SCOWN?

When it comes to healthcare related legal matters, Stephens Scown is your trusted partner. Let us help you navigate the complexities of the healthcare landscape while achieving your strategic goals. Contact us today to benefit from our in-depth sector knowledge, personalized solutions, and client-focused approach.

“Businesses, especially SMEs, need very capable hands in legal processes and the healthcare team at Stephens Scown have them in abundance!”  
Legal 500 (2023)

---

## CONTACT US

[www.stephens-scown.co.uk](http://www.stephens-scown.co.uk)

01392 210700

[healthcare@stephens-scown.co.uk](mailto:healthcare@stephens-scown.co.uk)



[www.stephens-scown.co.uk/business/specialist-sectors/healthcare](http://www.stephens-scown.co.uk/business/specialist-sectors/healthcare)

Stephens Scown LLP is a limited liability partnership registered in England and Wales (No. OC356696) and is authorised and regulated by the Solicitors Regulation Authority. The word 'Partner' in relation to Stephens Scown means a member of Stephens Scown LLP.